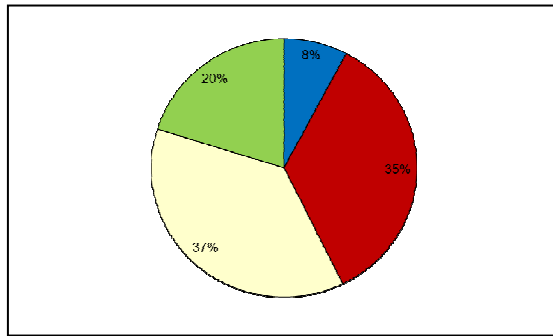
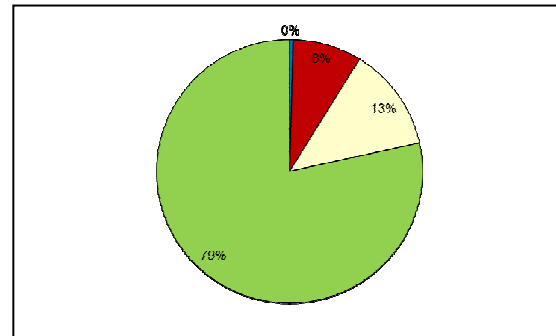


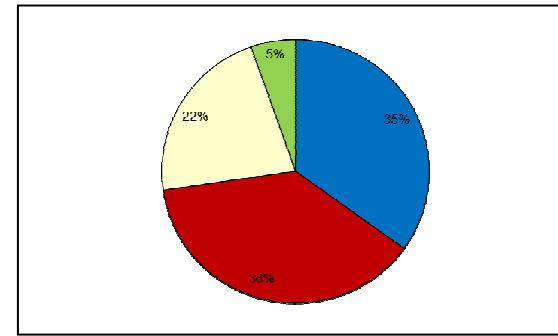
**Records Currency by Taxon Group**



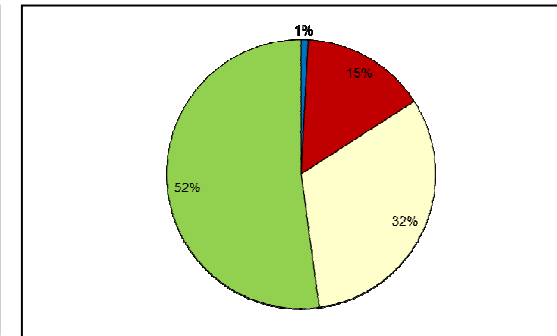
Moths



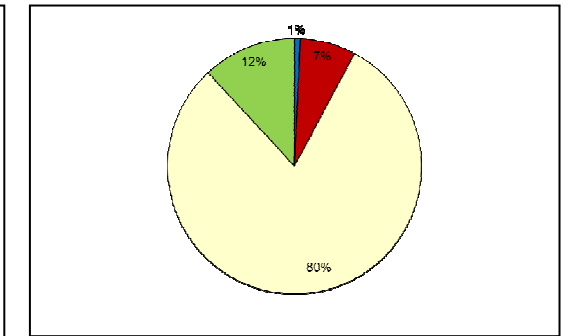
Vascular Plants & Stoneworts



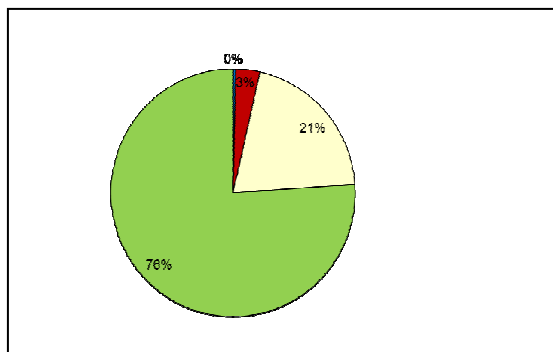
Birds



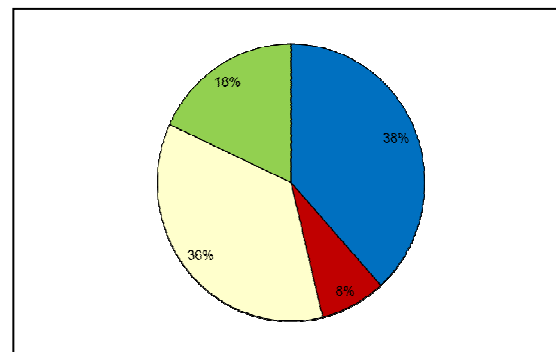
Coleoptera



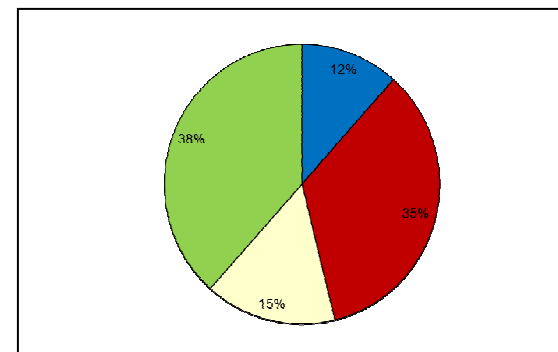
Butterflies



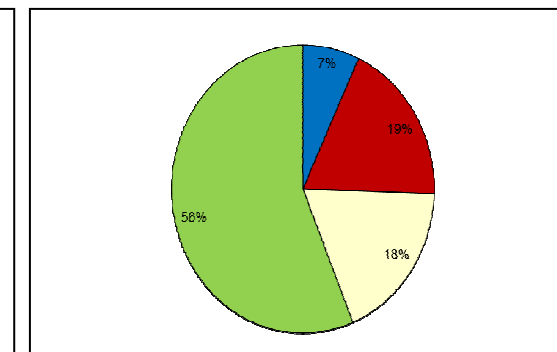
Fungi & Lichen



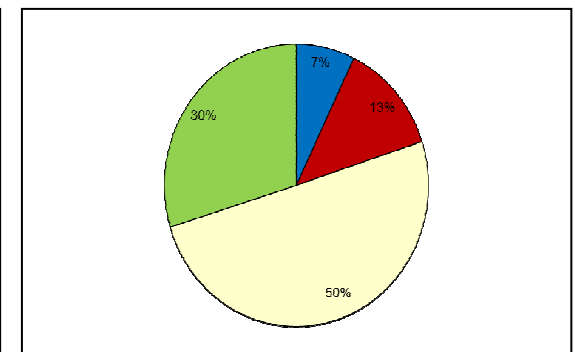
Terrestrial Mammals



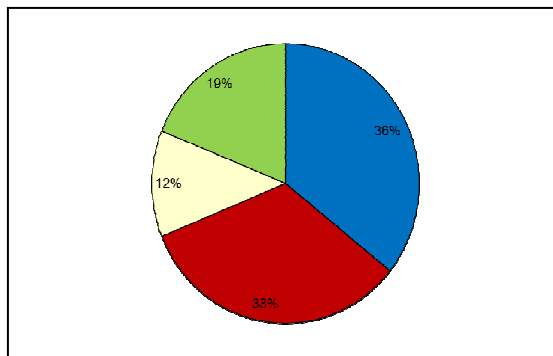
Diptera



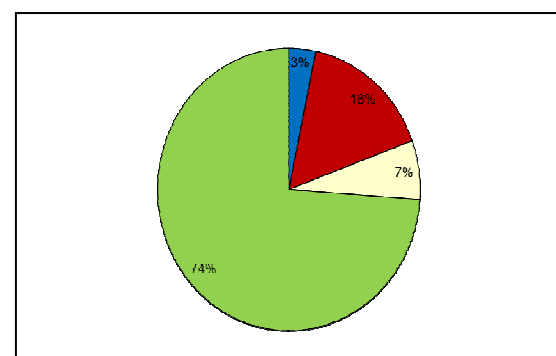
Other Invertebrates



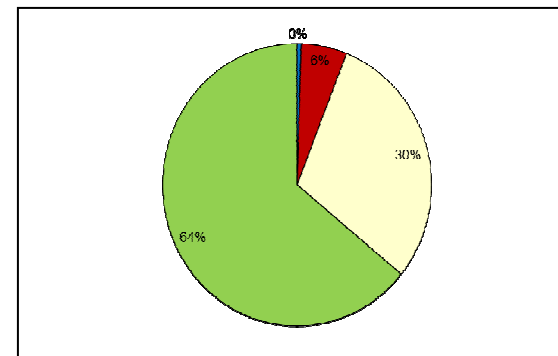
Non-Vascular Plants



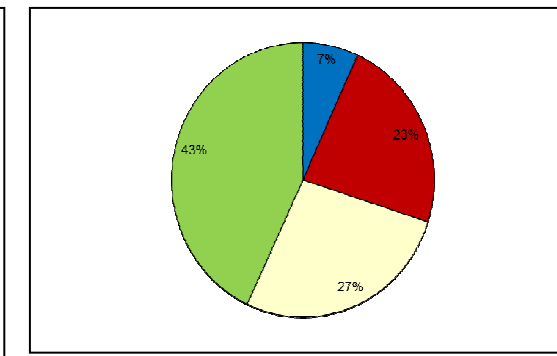
Hymenoptera



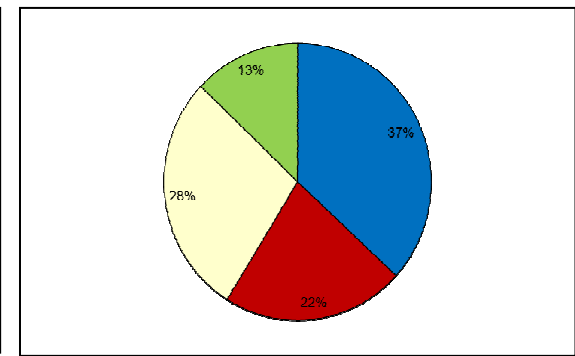
Odonata



Fish

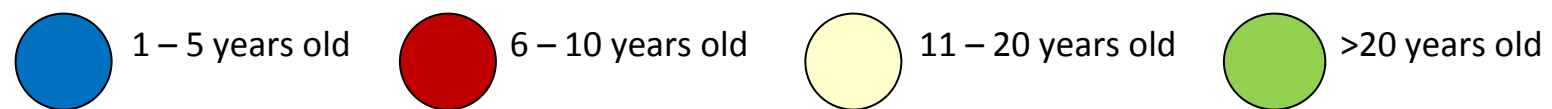


Amphibians & Reptiles

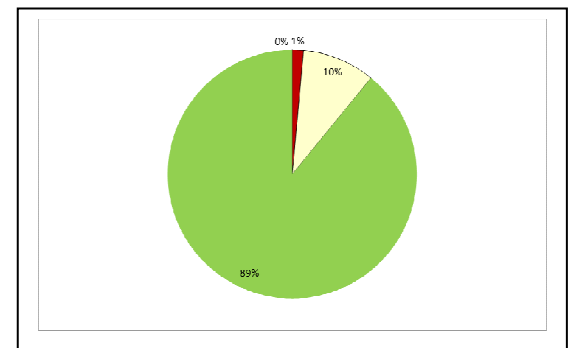


Marine Species

**KEY**

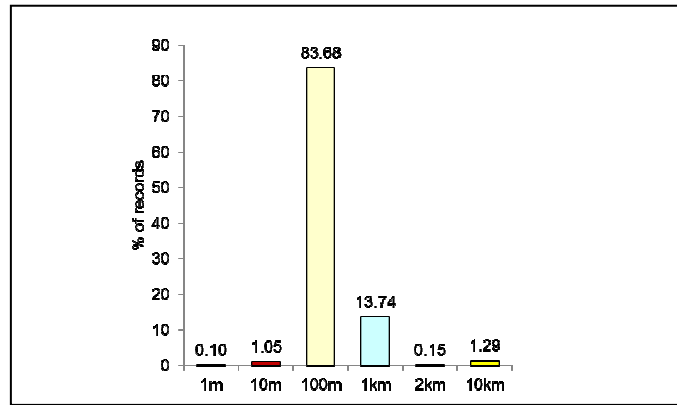


Please note, 0% means less than 1%.

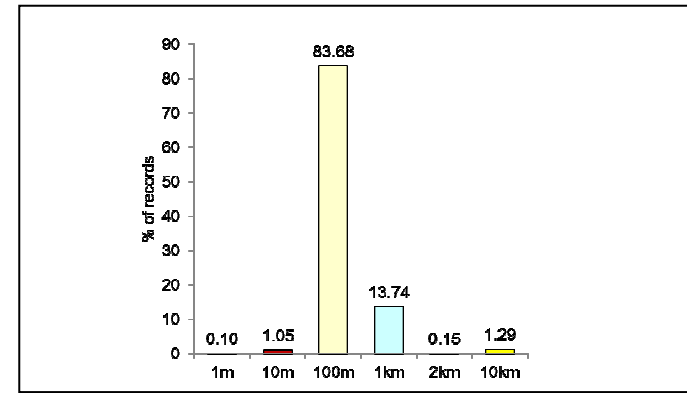


Other Taxa

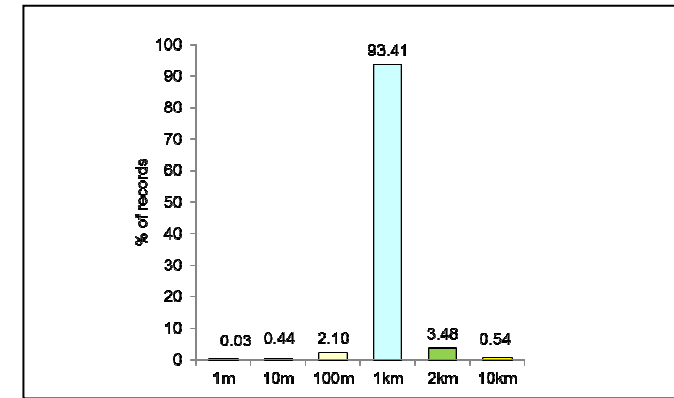
## Records Resolution by Taxon Group



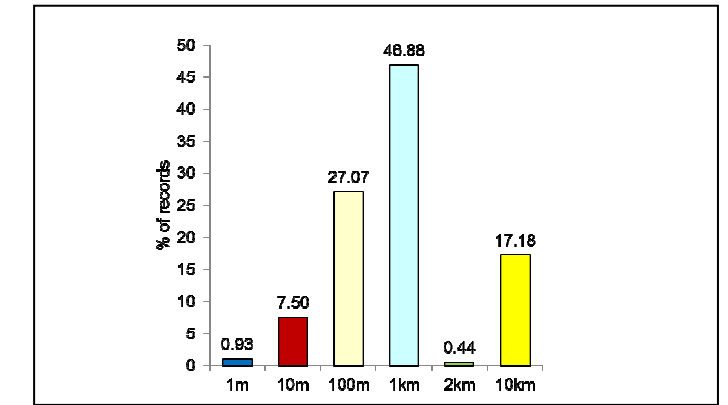
Moths



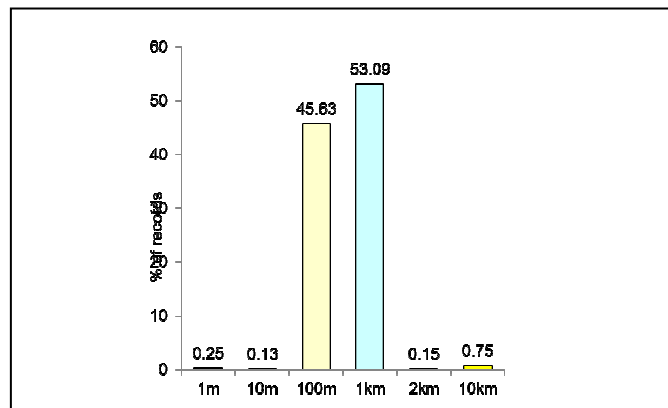
Vascular Plants & Stoneworts



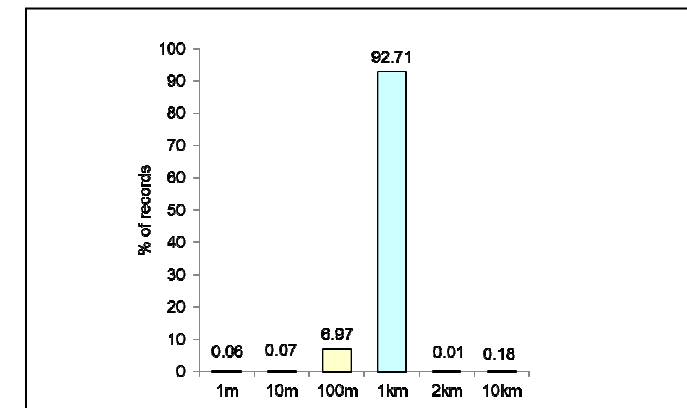
Birds



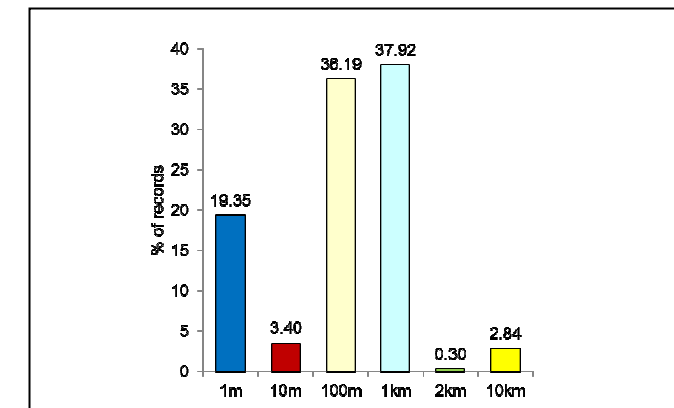
Coleoptera



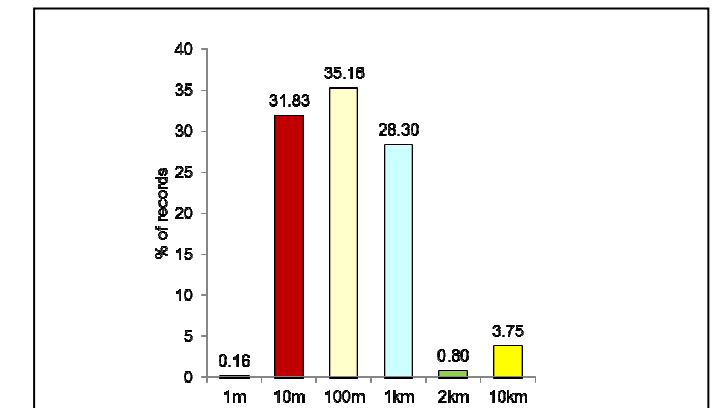
Butterflies



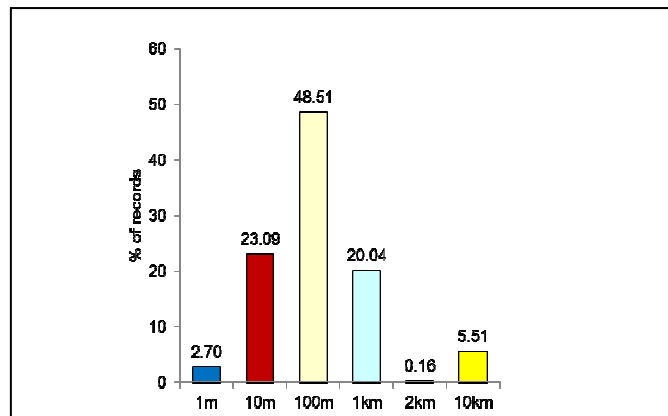
Fungi & Lichen



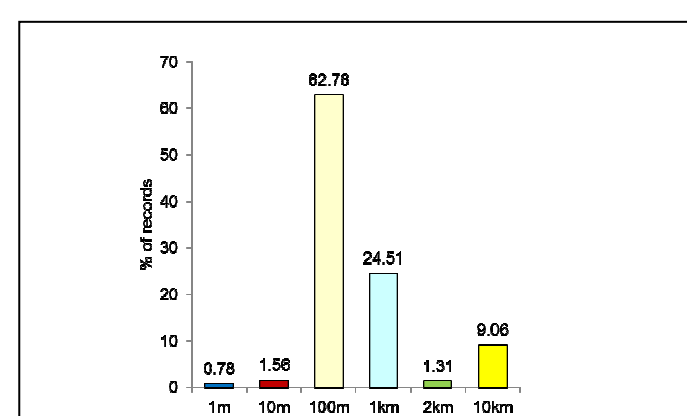
Terrestrial Mammals



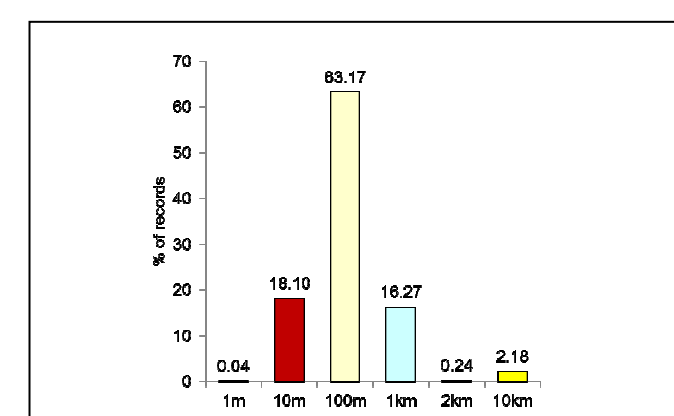
Diptera



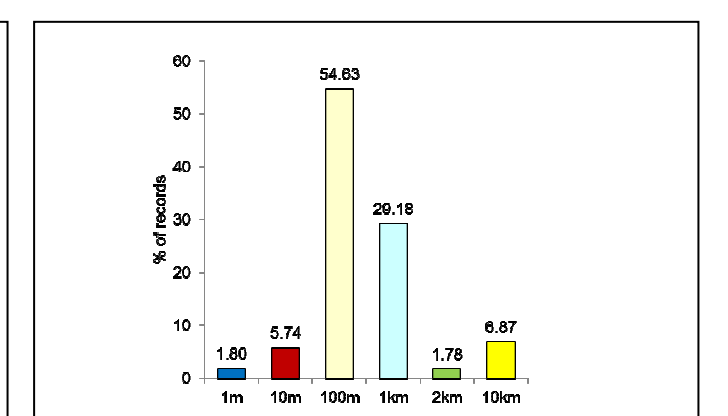
Other Invertebrates



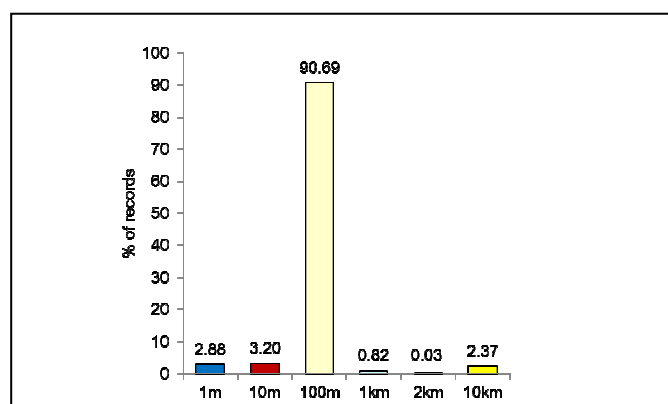
Non-Vascular Plants



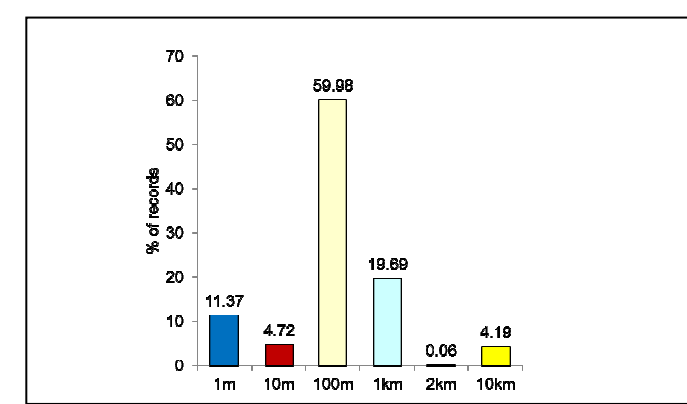
Hymenoptera



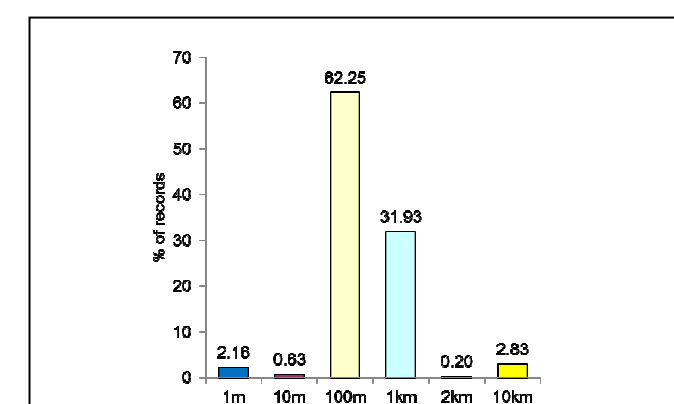
Odonata



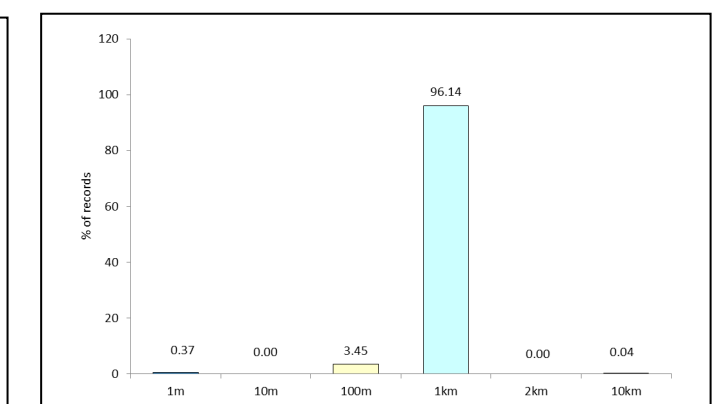
Fish



Amphibians & Reptiles



Marine Species



Other Taxa