



Poppyfield in north Norfolk.  
(Photo credit: Sarah Price)

## Welcome to the summer edition of the NBIS newsletter

In this issue, we highlight how a new report from NBIS can benefit district planning authorities. We also bring you news of recent projects from Norfolk's County Recorders.

Inside:

- New technology helps with badger recording;
- Gall wasp survey;
- Rare bee recorded;
- Matchstick flapwort recorded;
- NBIS developments;
- Big Urban Wildlife Watch results;
- New surveys;
- News in Brief.

**NBIS is a partnership of organisations including Natural England, Norfolk County Council, the Broads Authority, South Norfolk Council and North Norfolk District Council.**

It is one of a number of Local Record Centres in England and operates a not-for-profit service, recording, managing and interpreting wildlife information for the conservation and enhancement of biodiversity in Norfolk.

## Report showcases environmental data for North Norfolk District

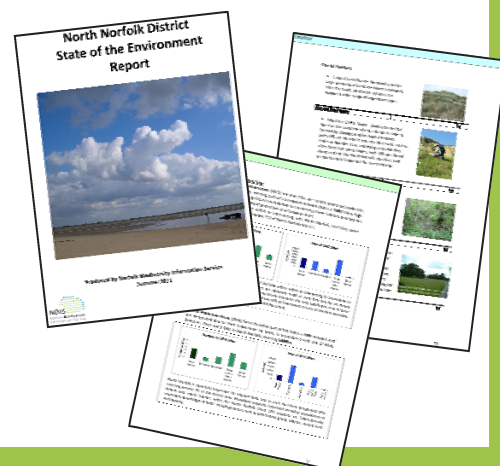
**NBIS is delighted to announce publication of its first "State of the Environment Report", a new concept that uses information drawn from the NBIS database and a wide range of individuals and organisations, to provide a rich illustration of the district's wildlife, historic assets, landscape, habitats, species and public access.**

With many colour photographs, maps and summary statistics, the report is readily accessible and draws comparison with other Norfolk districts and the county as a whole. The information contained in the report will act as a baseline against which future change can be monitored.

Assistant Biodiversity Information Officer, Lizzy Carroll, who has authored the report said: "NBIS is really well-placed to collate this information on a bespoke, district basis. The report represents an important resource for all those involved with decisions concerning the natural environment, such as planners. "

The report, which was produced by NBIS for North Norfolk District Council, builds on habitat mapping work completed under the terms of a Service Level Agreement between NBIS and the Council.

For further information about the report, contact Lizzy Carroll at [Elizabeth.carroll@norfolk.gov.uk](mailto:Elizabeth.carroll@norfolk.gov.uk)



NBIS is greatly indebted to the County Recorders who record Norfolk's wildlife and validate data from other sources. Here are some updates on recent projects.

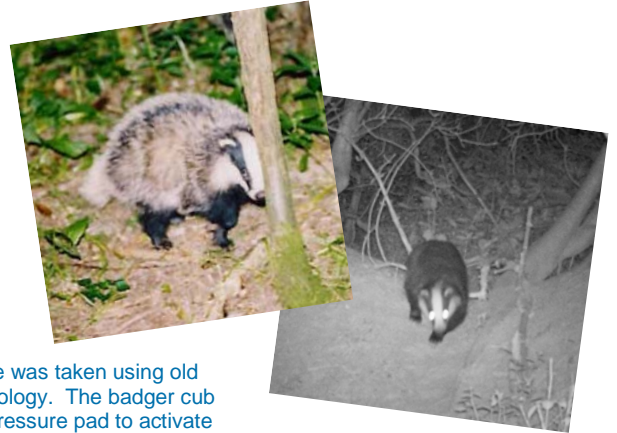
## New technology helps with badger recording

John Crouch, Norfolk Badger Recorder, has been using new technology to learn more about badgers in the wild. Badgers are largely nocturnal and early attempts to photograph them relied on a complex system of pressure pads activated by the badgers, which triggered flash photography. The results were a bit hit and miss and the flash often startled the badger. Recent advances in technology now mean that John can use a 'trail camera' to observe badgers during day or night without them being aware of the camera's presence (see pictures).

The Norfolk badger population is gradually increasing, although numbers are still low.

There are no plans to cull badgers in Norfolk as part of government measures to control the spread of bovine tuberculosis.

If you have spotted a badger in Norfolk, please get in touch with John at [Norfolkbadgers@yahoo.co.uk](mailto:Norfolkbadgers@yahoo.co.uk) (or NBIS).



This picture was taken using old style technology. The badger cub trod on a pressure pad to activate the camera. The flash has caused the cub to jump into the air to the full extent of its legs with its hair on end!

Trail camera used to capture badger leaving its sett: the badger is unaware of the camera.

Female (top) and male (bottom) wasps, *Xenophanes potentillae*.

## Gall wasp survey

Robert Maidstone, a keen naturalist and member of the Norfolk and Norwich Naturalists' Society (NNNS), is asking for help finding galls on the roots, runners and petioles of creeping cinquefoil (*Potentilla reptans*), a widespread plant found in gardens,



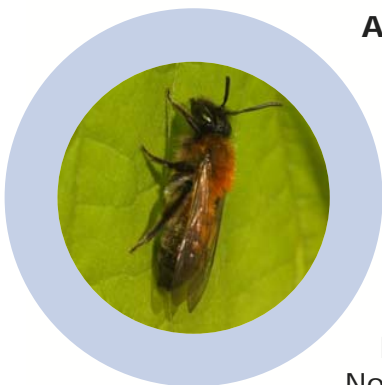
mown grass, roadside verges etc. The galls – abnormal growths - are produced by the plant following attack from a small wasp, *Xenophanes potentillae*, to create shelter and food for the wasp larvae. Robert is keen to establish if the wasp is as widespread as the plant. He needs to know:

- What you found - did you find any galls? (If no, please still submit your record – a 'negative' record is as useful as a 'positive' one). If you did, what type (top of root? on the runners or petiole?)
- Where you found it
- Your contact details

Send your records to Robert at: [robertwmaidstone@gmail.com](mailto:robertwmaidstone@gmail.com)



(Photo credit: Tim Strudwick)



### A rare solitary bee *Andrena varians*

was seen in Sheringham Park this May by Norfolk Bee Recorder, Tim Strudwick. This species has not been recorded in Norfolk since 1940!

Solitary bees construct their own nests without the help of worker bees, and play an important role in plant pollination. Norfolk has two bee experts: Nick Owens, who specialises in bumblebees; and Tim Strudwick, who is an authority on aculeate hymenoptera – an insect group that includes solitary bees.

[Nick@nickowens.wanadoo.co.uk](mailto:Nick@nickowens.wanadoo.co.uk)  
[timstrud@tiscali.co.uk](mailto:timstrud@tiscali.co.uk)

On 6<sup>th</sup> March 2011, the Norfolk arm of the British Bryological Society met at Holkham NNR. A perfect day of botanising was to follow with *Odontoschisma denudatum* (matchstick flapwort) as one of several highlights – a new species for Norfolk! This tiny liverwort was found by Alex Prendergast in good quantity on a pile of damp, decomposing logs under the shade of the site's pines.

(Photo credit: Alex Prendergast)



Identification was immediately confirmed by an excited Robin Stevenson, County Recorder for Bryophytes, and colleague Richard Fisk.

## NBIS developments



The NBIS website has been refreshed with a new look and more interactive features including:

- ✦ on-line recording for all public surveys;
- ✦ dynamic links to NBIS Flickr album and Facebook wall;
- ✦ an area for comment on some pages.

Check it out, and let us know what you think!

[www.nbis.org.uk](http://www.nbis.org.uk)

We are considering including a page on our website for local conservation groups involved with surveying and recording, to help them promote their work. If you know of a group that would like to be featured, please get in touch: [samuel.neal@norfolk.gov.uk](mailto:samuel.neal@norfolk.gov.uk)



NBIS is keen to encourage anyone with aspirations to get involved with biological recording in the county and are delighted with the **new programme of workshops** from Norfolk and Norwich Naturalists' Society. The events introduce recording for a number of species groups including grasshoppers, bugs, plants and fungi. Find out more at : [www.nnns.org.uk](http://www.nnns.org.uk)

**The Big Urban Wildlife Watch on 4<sup>th</sup> and 5<sup>th</sup> June, organised by Norfolk Wildlife Trust (NWT) and supported by NBIS, led to nearly 2000 further wildlife records for NBIS.** Members of the public sent in their sightings from four urban localities: King's Lynn; Thetford; Great Yarmouth; and Norwich over a 24 hour period. Some rare wildlife turned up, including Norfolk hawk – recorded at Rosary Cemetery in Norwich and the second-ever Norfolk records of *Rhagoletia Meigenii* (a fruit fly) in Norwich Castle gardens. This species was noticed by Dr. Tony Irwin, Curator of Natural History at Norwich Castle Museum, and Norfolk County Recorder for insects.

**Total numbers of species recorded: Great Yarmouth: 187; King's Lynn: 441; Norwich: 357; Thetford: 282.**

20th September, 1730 -1900 Norwich Research Park Annual Public Lecture, Sir John Lawton. Thomas Paine Study Centre Lecture Theatre, UEA.

23rd October 2011 - Apple Day at Gressenhall Farm and Workhouse 10am - 5pm

# New public surveys

NBIS is running a new **public moths survey** over the autumn, calling for records of: red underwing (*Cataocalca nupta*); large thorn (*Ennomos autumnaria*); and figure of 8 (*Diloba caeruleocephala*). Find out



Red underwing moth. (Photo credit: Brian Jones)

more from [www.nbis.org.uk](http://www.nbis.org.uk). You'll be able to submit your records direct through the NBIS website!

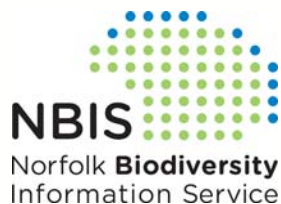
[www.nbis.org.uk/MothsAutumn2011Survey](http://www.nbis.org.uk/MothsAutumn2011Survey)

NBIS will also be collating records for the **Broad sweep survey** of six invasive alien species. Please submit your Norfolk sightings of: Himalayan balsam; Japanese knotweed; giant

hogweed; floating pennywort; red-eared terrapin and American mink via this link:

[www.nbis.org.uk/BroadSweep2011](http://www.nbis.org.uk/BroadSweep2011)

For further information on this survey, please contact Norfolk Non-native Species Initiative Co-ordinator, [Michael.sutton-croft@norfolk.gov.uk](mailto:Michael.sutton-croft@norfolk.gov.uk)



**Contact:** Norfolk Biodiversity Information Service (NBIS), Environment, Transport and Development, County Hall, Martineau Lane, Norwich, NR1 2SG

T 01603 224458  
E [nbis@norfolk.gov.uk](mailto:nbis@norfolk.gov.uk)  
W [www.nbis.org.uk](http://www.nbis.org.uk)

 [www.facebook.com/NorfolkBiodiversityInformationService](http://www.facebook.com/NorfolkBiodiversityInformationService)

 <http://twitter.com/NorfolkBIS>

 <http://www.flickr.com/photos/norfolkbis>

If you need this document in large print, audio, Braille, alternative format or in a different language, please contact us on 01603 224458 and we will do our best to help.

## News in Brief

### NBIS welcomes David White

NBIS is delighted to welcome David White to the Biodiversity and Countryside Team. David will play a key role in advising on district planning applications, particularly for Broadland District Council. David shares a name with Norfolk County Council's Chief Executive! so please be very careful if contacting him by email to include "etd" in his email address: [david.white.etd@norfolk.gov.uk](mailto:david.white.etd@norfolk.gov.uk)

### Broads Biodiversity Audit

Following the success of the Brecks Biodiversity Audit, an audit of Broadland biodiversity has been commissioned. Once again, **NBIS will play a key role** in helping to collate and present the information. This important study will map biodiversity on a landscape scale and will help with strategic planning to address challenges such as sea-level rise. The Broads audit was commissioned by the Broads Authority and will be undertaken by UEA, supported by NE and other organisations working in the Broads. Can you help? If you have any Broadland species or survey data not submitted to NBIS (or held elsewhere), please get in touch with [Martin.horlock@norfolk.gov.uk](mailto:Martin.horlock@norfolk.gov.uk)

### Social Media

NBIS is using **Facebook** and **Twitter** to keep you up to date with our work. We plan to explore further the use of social networks for citizen-science recording, with academics working in this area. Social networks such as Flickr and Facebook generate public interest and have advantages over traditional web-based and paper-based submissions, because they allow participants to engage directly with each other. Read more about social networks and the collection of biodiversity data at: <http://www.plosone.org/article/info%3Adoi%2F10.1371%2Fjournal.pone.0014381>

### E-bulletin

Our monthly e-bulletin, which is produced in collaboration with the Norfolk Biodiversity Partnership and Norfolk Non-native Species Initiative, has been going for four issues now. We hope this collection of useful links is helping you to keep in touch with local and national news and events. If you have any comments for us about the bulletin – or any of our publications or communications - please do contact [su.waldron@norfolk.gov.uk](mailto:su.waldron@norfolk.gov.uk)

Our funding partners:



**Norfolk** County Council



**Broads Authority**  
The Broads - a member of the National Park family

